

# INSTALLASJONSVEILEDNING

MOBILTELEFON SIGNALFORSTERKER

## Nikrans LCD500-4G-D



Frek.: 800, 1800 MHz  
Dekning: 500 m<sup>2</sup>

## PREFACE

This user's manual describes the installation and maintenance of wide band consumer boosters. Please do read user manual carefully before installing and maintaining repeaters. The information in this manual is subject to change without prior notice.

# 1. SAFETY WARNINGS

Users must follow the principles below◇



Repeater should follow system requirements; assure good grounding and lightning protection.



The power supply voltage of repeater should meet security requirements; any operation shall be carried out only after turning off power in advance. Only the professional is authorized for the operation.



Do not dismantle machine, maintain or replace its components by yourself, because this way the equipment may be damaged and you may even get an electric shock.



Do not open the repeater, touch the module of the repeater, or open the cover of the module to touch electronic component. The components will be damaged due to electrostatic.



Please keep away from heating equipment, because the repeater dissipates heat during working. And do not cover a booster with anything that influences heat dissipation.

## 2. INTRODUCTION AND REASONS FOR WEAK CELLULAR SIGNALS

Mobile Signal Booster is a perfect solution for providing improvement of cellular signal reception inside a house, office, restaurant, VIP Room, apartment, building or shopping mall.

Generally cell phones cannot pick up or maintain a strong cellular signal due to one of the two following reasons:

1. **Location of the Nearest Base Station** – Base stations are used to provide broad coverage. However there are many areas in which signal strength gets reduced due to topographic peculiarities or local Governmental restrictions regarding the height or location of base stations. Rural areas generally have fewer base stations than urban regions.

2. **Natural and Man-Made Obstructions** – Signal strength can also be negatively affected by trees, hills, buildings, weather and other obstructions. You may be relatively close to a base station but still unable to make a call. This often occurs inside houses, offices and other buildings with stucco, concrete or metal walls that may block the signal.

The Signal Booster works with two antennas. An Indoor antenna communicates with your cell phone and an Outdoor antenna communicates with the base station (BS). The Outdoor antenna receives a signal from the BS and sends it through the cable to the Signal Booster, where it gets amplified and re-transmitted by the Indoor antenna throughout a building. When the Indoor antenna picks up a signal from your cellular device, the Signal Booster amplifies that signal and transmits it through the cable to the Outdoor antenna and back to the BS.

*(Note: The Signal Booster will only operate if there is an adequate signal to amplify.)*

## 3. MODEL DESCRIPTION

Nikrans LCD500-4G-D LTE-antenneforsterker for nettverk er designet for å forsterke 4G-signal i mellomstore områder. Få en passende forsterker modell til den beste prisen!

Nikrans LCD500-4G-D LTE og GSM-nettverk antenneforsterker gir kvalitetsforsterkning av mobiltelefonens signalet for 4G-data på 800 MHz og 1800 MHz frekvenser. Enheten er egnet for mellomstore arealer opp til **500m<sup>2</sup> (5400ft<sup>2</sup>)** som private hus, minimarkeder, restauranter, kontorer, parkeringsplasser og lignende. Hovedarbeidsfrekvensen til denne booster er 800 MHz, som er det mest spredte båndet i **europaisk land** for 4G mobilt internett. Enheten fungerer også på **1800 MHz-frekvens**, som er en ekstra for **4G- og GSM**-signaler i Europa.

Denne trådløse signalforsterkeren **garanterer sikker mobiltelefonkommunikasjon uten avbrudd** takket være følgende fordeler:

- **LCD skjerm.** Du vil kunne konfigurere og bruke denne signalforsterkeren uten problem, selv om du ikke er tekniker. All nødvendig informasjon og tips for installasjon vises på skjermen.
- **Auto Levelkontroll.** Spesiell programvare i forsterkeren gir selvjustering avhengig av styrken til det innkommende signalet.
- **Multipoint kontrollenhet.** Forsterkeren er i stand til å oppdage systemfeil og aktivere beskyttelsesprogram.

**Gjør din mobilkommunikasjon ved å kjøpe LCD500-4G-D GSM / LTE / 4G nettverksantenn forsterker akkurat nå!**

Nikrans LCD500-4G-D-modellen er **enkel å installere og bruke**. Signalet forbedres trådløst slik at du kan få bedre dekning uten ekstra tilbehør til mobiltelefonen din. Signalet blir også **automatisk forsterket bare i løpet av 5-7 sekunder** etter installasjonen. Installasjonsprosessen er så enkel at det ikke er nødvendig å ha noen teknisk kvalifisering for å kunne utføre den.

Enheten er helt **helsesikker for mennesker**, da den forsterker signalet, den sprer ikke skadelige strålingsbølger over området.

Signalforsterker LCD500-4G-D er en perfekt måte å forbedre mobilforbindelser på din mellomstore innendørs beliggenhet!

[Vårt profesjonelle team](#) er alltid klar til å svare på alle spørsmålene dine.

## 4. SPECIFICATION

Dekningsområde:	500 m <sup>2</sup>
Opplinkfrekvens:	831-861 & 1710-1785 MHz
Inngangsfrekvens:	791-821 & 1805-1880 MHz
Opplinkvinning:	67 dB
Nedlinkvinning:	75 dB
Strømforsyning:	AC 110~220V, DC5V/2A, 7W
Energiforbruk:	0.01 kW/h
Fungerer i temperaturer på °C:	-25/+55
Fuktighet:	5 - 95 %
Størrelse (mm):	225 × 140 × 35
Forsterkerens vekt:	2 kg
dBm:	17 dBm

## 5. REPEATER SYSTEM OVERVIEW

The picture below shows how simple and fast booster installation is and how effectively it works.

A Yaggi or panel antenna (it depends on the booster model and its power), as donor/outdoor antenna, is installed at the top of the roof to pick up good mobile signals from the base station, and sends them through the cable to the booster where the signals get amplified significantly; and then the output signals are distributed throughout the area by the indoor/server antenna. Clear phone calls or high speed mobile data are immediately achieved within the area.

A repeater kit includes:

- **Outdoor Antenna**◊  
Outdoor panel or wide band Yaggi is recommended.  
Function: To pick up outside signals from the base station and send them by cable to the repeater; outdoor antenna also transmits the uplink signals from the repeater back to the base station.
- **Indoor Antenna:**  
It is mounted inside a building to transmit the improved signals throughout the coverage area.
- **Cables:** Coaxial cables for indoor and outdoor antennas.
- **Mountings:** Special mountings for antennas and the booster (depends on a booster model)
- Power Supply

**Optionally:**

- **Splitters** or couplers: when the building structure is too complicated or there is big loss due to thick walls or other reasons, splitters or couplers shall be used so that more antennas can be installed in separate zones to distribute the signals to each corner of the coverage area.
- **Additional indoor antennas:** when the building structure is too complicated



## 6. ANTENNAS AND CABLES SETTING UP

### 6.1. Outdoor antenna installation



The repeater's main function is to improve weak RF signals in an area. The formula is:  $\text{Input power} + \text{Gain} = \text{Output power}$ . The signal strength from an outdoor antenna directly affects the efficiency of the indoor coverage. It is very important to choose the correct outdoor antenna location in order to get the best signal.

If you don't know exactly where your operator's base station is located, go through the antenna aiming process for getting the best result. To aim the antenna correctly, follow the steps below:

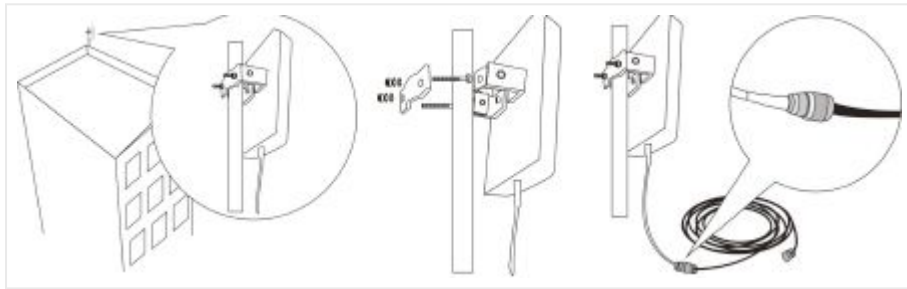
1. Setup the entire booster system, including antennas and cables, and power it on.
2. A person on the roof aims the antenna in a certain direction. The other person inside waits for 1 minute and checks signal level on the phone.
3. Then rotate the antenna its 1/8th of the way around, which equals 45 degrees. The person inside does the same procedure with signal testing.
4. Repeat the process 8 times until you try all 8 directions, in every 45 degrees sector.
5. Compare the results of signal testing - the closer dB parameter to 0, the better booster performance you get.
6. Fix the antenna in the direction with better signal result.

Note! We recommend mounting the antenna on the side of the building aiming away from the building, which will reduce amount of possible obstacles. For your convenience and acceleration of the process perform the testing in pair.

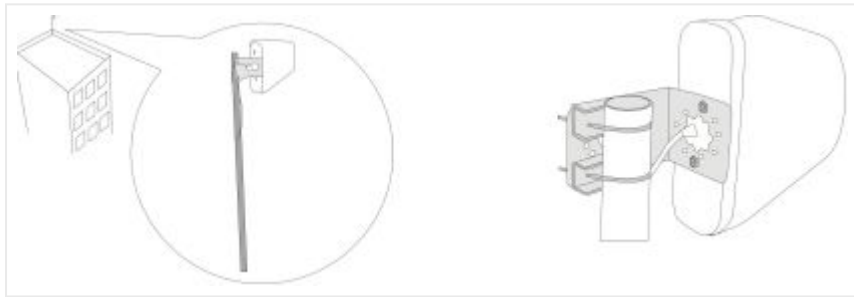
- The mobile phone shall display full bar signals in location where the outdoor antenna is installed. Phone calls or data transmission shall be smooth and stable. It is recommended to test the signal 3 times in location where an outdoor antenna is to be installed. As shown from the illustration above, you should test the signals in points from A to E, and select a best place that displays full bar signals.
- Outdoor antenna installation Requirements:  
Outdoor antenna should be installed on the roof of the house or in some other place where your mobile device is within coverage zone. Mobile signal should be as strong that at least three-four bars are indicated on your phone display.  
Outdoor antenna should be fixed in straightly.  
It is necessary to waterproof connectors of the outdoor antenna and feeder lines.  
Repeater is a two-way signal amplifier. So proper isolation between outdoor antenna and indoor antenna is necessary in order to avoid self-oscillation. A perfect example of self-oscillation is when you take a MIC and a loudspeaker for example; if they are too close to each other, it could cause big noise.  
If isolation can't be achieved due to limited distance, the roof of the building, walls or any other barriers can be used between antennas to increase isolation.



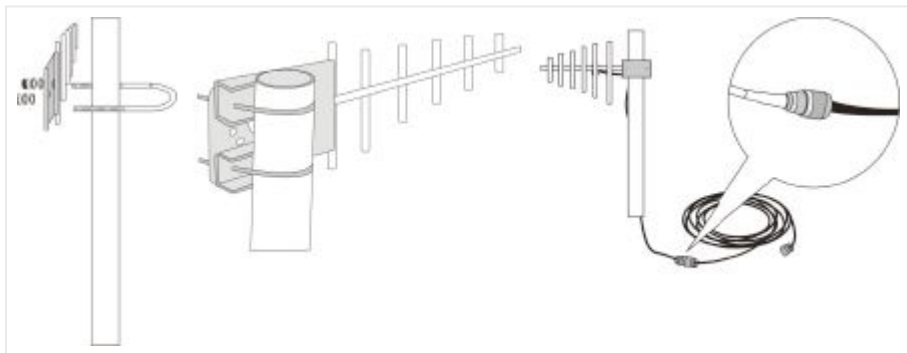
## Installation of a panel antenna as an outdoor antenna



## Installation of Yagi wide band antenna as an outdoor antenna



## Installation of a Yaggi antenna as an outdoor antenna



## Cable layout and connector assembly

1. Keep the type, specifications, routing direction, location and curvature radius of cables in compliance with the model requirements. Place cables in correct order, bend them smoothly, and protect the surface from any damage.
2. Place RF cables separately from power cables. Take proper isolation measures if they have to be placed on the same cable racks owing to the site condition restrictions.
3. Fasten all connection parts of the whole system in correct order, from the antenna to repeater interfaces, and make sure that the electrical interfaces are well contacted. Give waterproof treatment to outdoor connection parts.
4. Take lightning protection measures for the antenna and feeder system in accordance with the system requirements. Avoid deforming the antenna feeder where grounding clips are placed, and give waterproof treatment to the feeder.

## Indoor antenna installation

Correct antennas types shall be used according to the site conditions and the requirement.

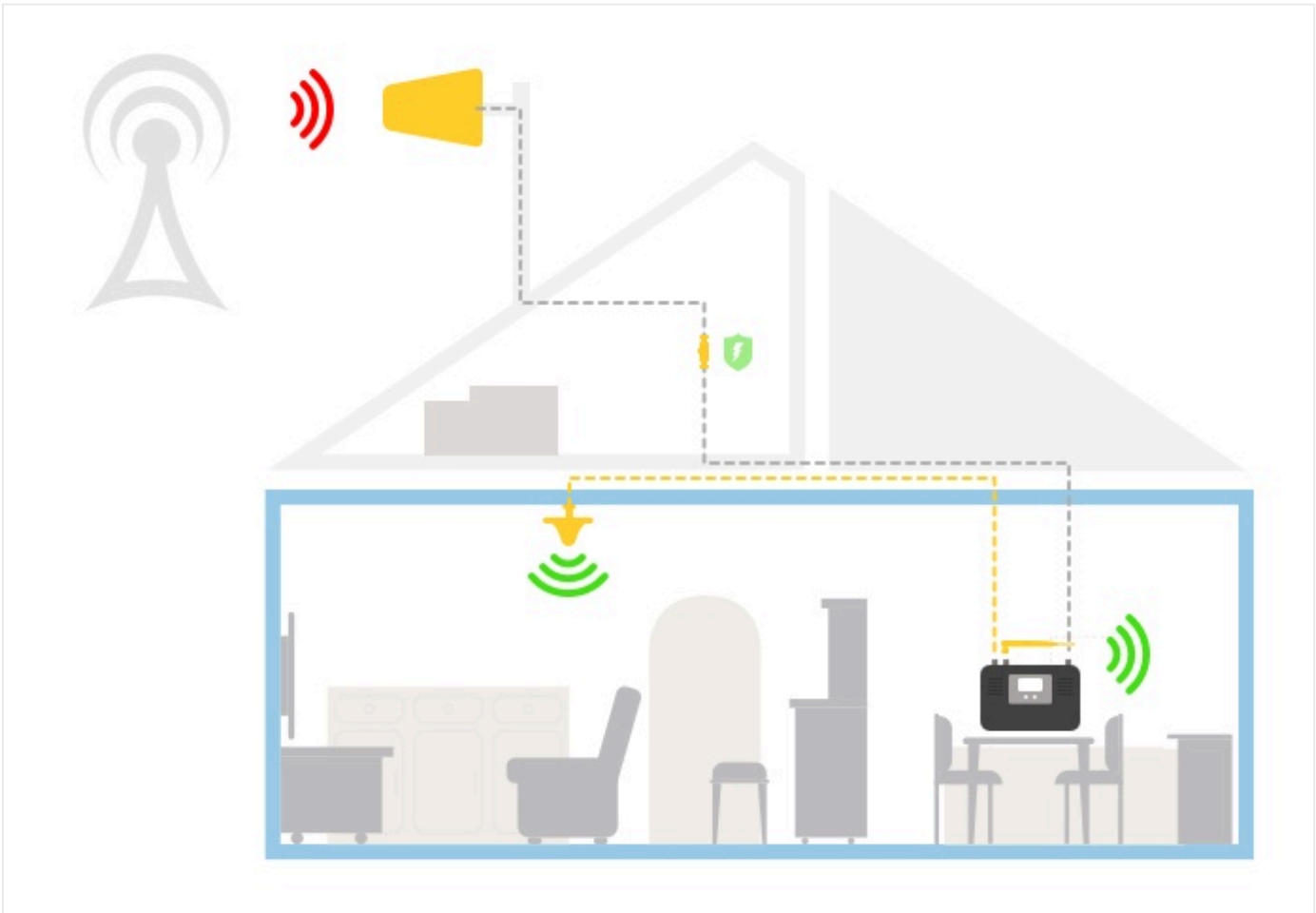
1. Omni antenna (ceiling Omni or whip antenna) shall be installed in the center and radiate all directions.
2. It is better to use a directional panel antenna or Yaggi antenna when the area shape is long and narrow (corridors, long row of houses in two sides, tunnels or elevators or rural open space).

**Requirements to indoor antenna installation:**

- indoor antenna should be 5 meter distance from an outdoor antenna
- indoor antenna should be at least 2 meters above the ground
- indoor antenna should be fixed vertically with the ground.



## Installation with 2 indoor antennas



### INSTALLATION STEPS

1. Find an appropriate position for an outdoor antenna. (see the requirements in 6.1. sect. )
2. Plug in the outdoor antenna to the mobile booster from BS side and fasten tightly.
3. Plug in the indoor antenna to the mobile booster from MS side and fasten tightly.
4. Connect the signal booster to the Power Supply.

!Some models have an inbuilt Power Supply. Please, examine the manual applied to your model, if your signal repeater kit doesn't include separate Power Supply, skip this step!

If the light indicator on the booster turns on it means the installation has been implemented correctly.

*NOTE: Switch on the signal booster only after you connect outdoor and indoor antennas in the proper way!*

5. Test the signal of your mobile telephone – a maximum quantity of bars should be indicated on the display of your phone in each corner of the location within booster coverage zone. In case the mobile signal is still instable try to change the position of the outdoor antenna for more proper one.

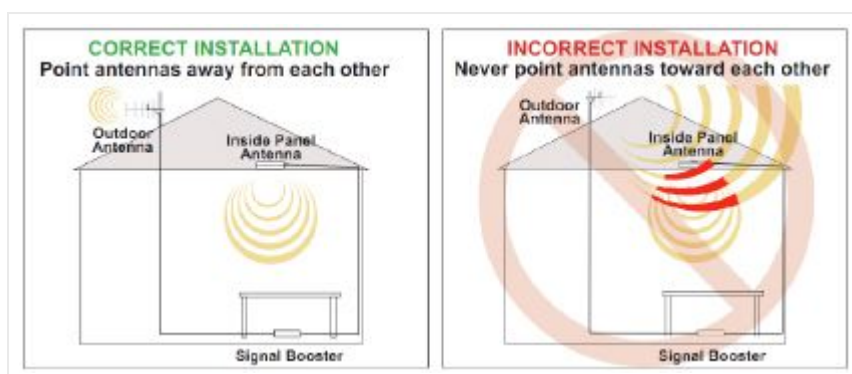
### Important notes for installation:

1. Cables from outdoor antenna should not be wound and be placed as straight as possible in order not to create any hindrance for signal reception and its transmission.
2. Cables should be shortened to the acceptable maximum so that not to waste or decrease mobile signal coverage range.

3. In order to prevent water from coming into the mobile phone booster through the cable make a loop in it.
4. Keep the outdoor antenna as far as possible from frequency aerials, high voltage cables, metal nets or transformers.
5. Don't put the antennas (outdoor and indoor) too close to each other. Recommended distance is 10-20 m. Be sure to point them to the opposite directions to avoid the risks of malfunctions such as self-oscillation or interference. It's also recommended that they are not placed in direct vision to each other (use metallic obstacles, wall, ceiling, slab, etc).
6. Plug the power supply into the Signal Booster input (carefully, to avoid damaging the center pin) and then into a wall outlet.

**Note:** It is recommended to plug all AC power supplies for home electronics into a Surge Protector Power Strip.

7. Switch the booster on only after having positioned the antennas correctly, according to the instructions above.
8. Using multiple Signal Boosters in one installation could cause interference to the base station (except for the In-Line Signal Boosters).



## 7.2.2 Repeater's ports description



1. Outdoor port BS: for connecting the outdoor antenna by cable.
2. Indoor port MS1: for connecting the indoor ceiling antenna by cable.
3. Indoor port MS2: for connecting the indoor whip antenna directly or the indoor ceiling antenna by cable.
4. DC IN: for connecting a power supply.

**Note!** You can use only 1 indoor antenna instead of 2 in case the area to cover is small.

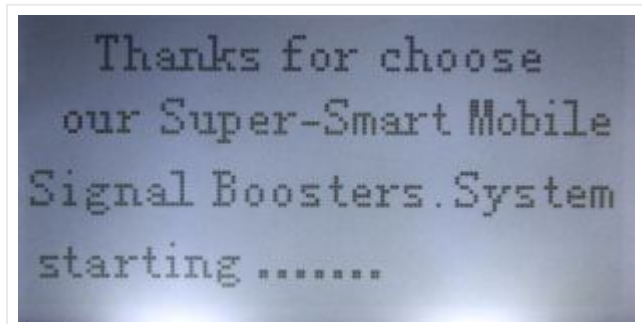
## 7.2.3 Accessories selection

Choosing accessories pay attention to the two characteristics - frequency and impedance. All accessories shall support the repeater's frequencies. For example, if the repeater's frequency is GSM900, all the

accessories must support the GSM900 frequency.

### 7.3. Repeater Settings

#### 7.3.1. Indicator Light Instructions

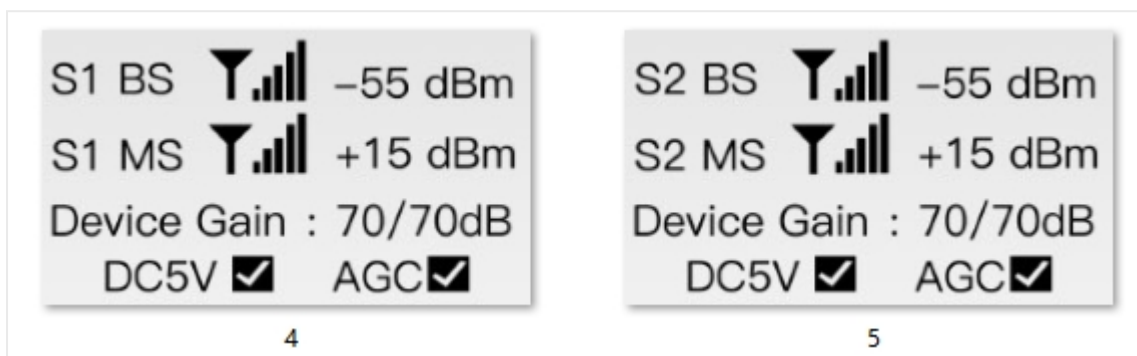


Introduction screen. The introductory page is displayed at the screen for 10 sec during the system check-up.



When the device completes the internal self test, it shows the standby screen. If the arrow down is displayed at the bottom right corner, the device has detected signal reception problems. In this case press Page Down button to see possible solutions. Resolve the issue basing on the recommendations.(see possible troubles and solutions below in Questions & Solutions paragraph)

If the problem is resolved, the screen will display as below. No arrow means that the repeater works correctly:



**LINE 1.** BS shows the level of outdoor incoming signal for the corresponding frequency band. Make sure it is as low as possible.

Note! For the optimal functioning of the booster, the BS (input) index should be from -70 to -55 dBm. If the BS is lower than -70 dBm, the coverage will be smaller. However, the device can work normally. If the BS is

too weak, it'll be necessary to adjust the position of the outdoor antenna by raising it as high as possible (on a pole on the rooftop) and pointing it towards the provider's nearest base station.

If the BS is higher than -55 dBm, the device will have self-excitation issue. In such cases, the output signal will drop during communication. If the antennas are placed very close to each other, it will evoke self-excitation. To fix the problem, you would need to place the outdoor antenna at the largest possible distance from the indoor antenna.

**LINE 2.** MS shows the output power of a booster.

Note! The MS (output power) index must be between +01 and +15 dBm.

**LINE 3.** Device gain shows the current gain (left) and maximal gain (right) of the device. For optimal function both values must be equal (current gain=max gain).

Line 4 shows that power supply is connected and works properly (DC5V) and automatic gain control of the system is also active (AGC).

**LINE 4.** Power DC 5V shows that power supply is connected and works properly. AGC function for automatic gain adjustment.

Note! In LINE 4 in its right corner can appear the **exclamation point or an arrow**. It denotes an installation error. Use UP and DOWN buttons to see the reasons. For more details, read the section QUESTIONS & SOLUTIONS.

**UP Button:** Go to the previous page to check the functioning status of the device or see the error description.

**DOWN Button:** Go to the next page to check the functioning status of the device or see the error description.

On the LCD screen you can see essential data about supported frequency bands. Depending on your model and the number of bands, the displayed data will vary.

**If you have a dual-band model (2 bands):**

**S1** - data for the lowest of the supported bands

**S2** — data for the highest of the supported bands

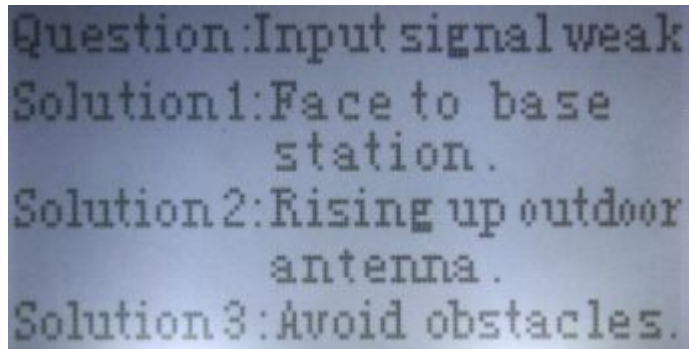
**If you have a triband model (3 bands):**

**S1** - data for the lowest of the supported bands

**S2** — data for the middle of the supported bands

**S3** — data for the highest of the supported bands

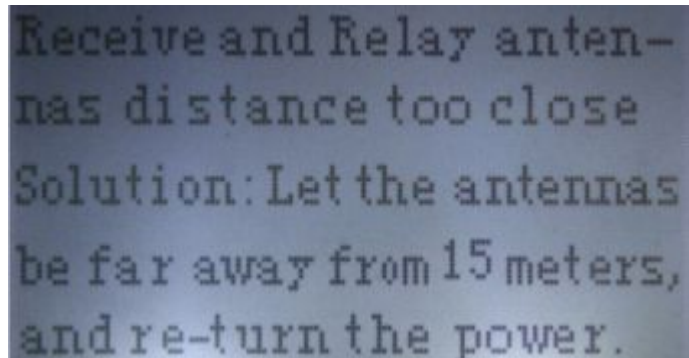
## Questions & Solutions



Question: Input signal weak  
Solution 1: Face to base station.  
Solution 2: Raising up outdoor antenna.  
Solution 3: Avoid obstacles.

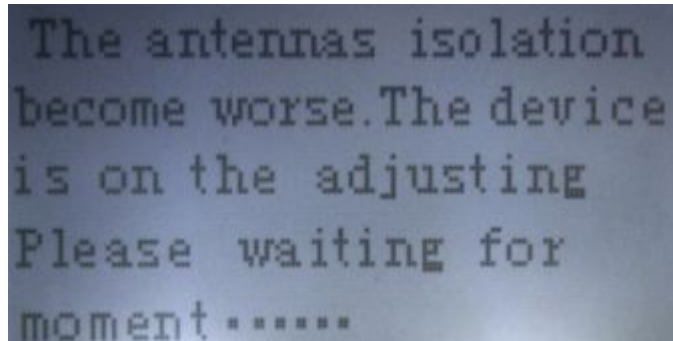
If the device detects that the incoming signal is weak, try 3 possible solutions:

- Solution 1. Direct the outdoor antenna to provider's nearest base station.
- Solution 2. Change the position of the outdoor antenna. Try to put it as high as possible.
- Solution 3. Reinstall the outdoor antenna trying to avoid obstacles between the antenna and provider's base station.



Receive and Relay antennas distance too close  
Solution: Let the antennas be far away from 15 meters, and re-turn the power.

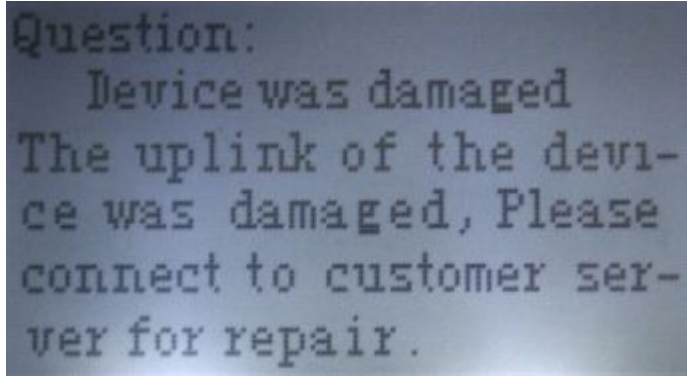
If the device detects that the outdoor antenna is too close to the indoor, change the position of either or both antennas to avoid self-oscillation. Mount them at least 15m one from another.



The antennas isolation become worse. The device is on the adjusting  
Please waiting for moment.....

If the device detects self-oscillation between the antennas and says that the system is being adjusted, it means that the system has detected the problem of bad isolation between the antennas and AGC is adjusting the system gain automatically to make the device work correctly. No actions are required from you.





If the system shows "Device was damaged" note, it means that the uplink/downlink was damaged. Contact customer service for repair.

### **What signal level in dBm is optimal for the correct booster functioning?**

For the optimal functioning of the booster, the BS (input) readings should be between - 65 and 50 dBm. The MS (output power) readings must be between +05 and +15 dBm. Device Gain must be 65/65 dB. If the BS is lower than - 65dBm, the coverage will be smaller. However, the device can work normally. If the BS is too weak, it'll be necessary to adjust the position of the outdoor antenna by raising it as high as possible (on a pole on the rooftop) and pointing it towards the provider's nearest base station. If the BS is higher than - 50 dBm, the device will have a self-excitation issue. In those conditions, the output signal will drop during communications. If the two antennas are placed very close to each other, it will evoke self-excitation. To fix the problem, you would need to place the outdoor antenna at the largest possible distance from the indoor antenna.

In case of installation errors an exclamation point/arrow appears on the LCD screen. It happens in two cases:

#### 1. Input signals (external BS) are weak.

It can happen that even with a weak signal the amplifier works well. In this case, nothing should be done. Just ignore a flashing exclamation point. However, if the indoor coverage is still very low, it will be necessary to adjust the position of the outdoor antenna so that it can pick up a stronger signal. For that, try 3 possible solutions:

Solution 1. Direct the outdoor antenna to provider's nearest base station.

Solution 2. Change the position of the outdoor antenna. Try to put it as high as possible.

Solution 3. Reinstall the outdoor antenna trying to avoid obstacles between the antenna and provider's base station.

#### 2. The separation between the two antennas (outside and inside) is not sufficient.

This can cause interference between antennas and, as a result, the device will reduce the device gain. The output signals will, therefore, be very weak. To avoid the risks of this type of malfunction, make sure not to put the 2 antennas too close to each other, ( $D = 10-20$  m) and never to orient them face to face, ideal would also be that they are not in direct vision (use of a mineral or metallic obstacle, wall, ceiling, slab, etc.), and they aim opposite directions, or at least frankly different.

### **Does my signal booster work if its LCD screen is switched off? What does Sleep mode mean?**

The signal booster enters into Sleep mode only when you don't use it. During Sleep mode only the LCD display turns off, while the amplification system keeps on functioning. This function allows saving energy. In case you need to see information on the screen, just push any button.

### **Can I use 1 indoor antenna if I don't need 2?**

Yes, you can use only 1 indoor antenna if the distance between both indoor antennas in your case cannot exceed 5m. However, if you can install the indoor antennas at the distance exceeding 5m or create some obstacles like walls between them, we recommend you using 2 indoor antennas for more effective signal distribution and larger coverage.

## 7.4. System Test

### 7.4.1. Check whether the coverage is good

1. Take a test with a mobile phone or a data card (engineering mobile phone is preferred).

To test signal level with a cell phone, make use of its engineering mode (Field Test Mode), which is an application available in free access or a phone mode requiring no extra setups. On most used mobile OS (operating systems) the test mode can be started as follows:

- iOS. Type \*3001#12345#\* and hit Call
- Android. Type \*##\*#197328640#\*##\* to activate
- Windows. Type ##3282# and start.
- Blackberry. Press TOOLS, SETTINGS, STATUS or OPTIONS, STATUS.

Note! To get parameters for 2G, 3G and LTE, disable WiFi. In case you cannot find Field Test Mode on your cell phone, use bars on the screen of your mobile phone to evaluate the change.

If the signals in most areas have not been improved, please check recommendations below again:  
- Weak input signal leads to low output power. To increase input signal power level, change the direction of the outdoor antenna or its installation position or replace it for an antenna with higher gain.

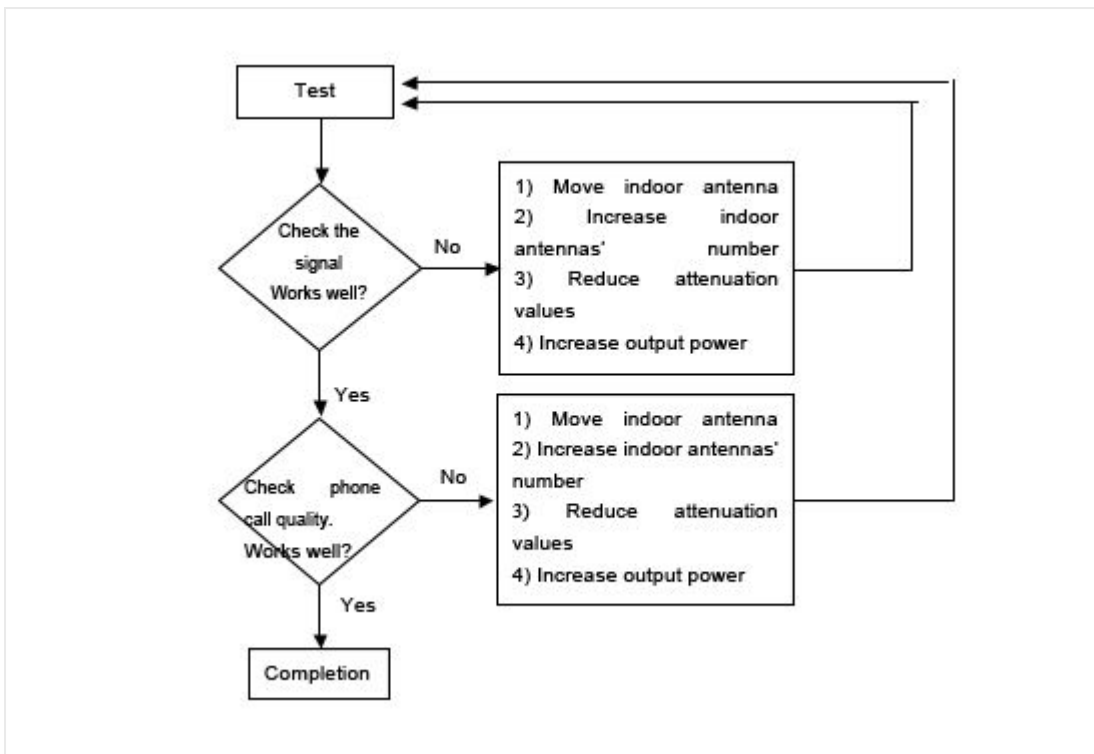
- Check whether it is necessary to use additional indoor antennas as barriers block signal penetration; also check whether the repeater's power is enough; please install extra indoor antennas or replace the repeater for another model with higher power level.

2. If the signals in small parts of the area have not been improved, please check the following:

- Check whether the indoor antenna is installed correctly or not; you may try to change the antenna location to improve coverage.

- Check if it is necessary to adjust the direction of the indoor antenna.

- Check whether it is necessary to add one or more antennas to enhance the coverage in special areas.



For maximum precision in signal level testing, switch your cell phone into Field Test Mode and see dB parameter. The closer dB signal level to 0, the better cell phone reception you'll get.

- -105 to -100 = Bad/drop call
- -99 to -90 = Getting bad/signal may break up
- -89 to -80 = OK/shouldn't have problems, but maybe
- -79 to -65 = Good
- Over -65 = Excellent

Your task is to get at least -79dB signal to ensure reliable communication and strong signal inside the building.

Remark:

- **Reduce attenuation values** \* — by ensuring the isolation level
- **Increase output power** \* — recommended ways: to adjust outdoor antenna direction/location, or replace it to an antenna with higher gain to increase input signal strength.

#### 7.4.2 Repeater can not communicate in Power-ON status

1. The power is on but there is a signal fluctuation or a flash signal. The phone call cannot be made/received.

It shall be caused by the insufficient isolation between outdoor and indoor antennas.

##### Please take the following measures:

- Firstly check whether the alarm LED lights. The light may indicate the isolation is insufficient.
- Secondly adjust the antennas' directions or locations or enlarge distance between them.
- Thirdly reduce the repeater's gain by ATT DIP if the above listed methods don't work.

##### The following measures can also be helpful:

- Use the roof of the building to enlarge isolation (Please try to place the outdoor antenna and indoor antenna on different floors).

- Use some obstacles (Such as walls).

2. The repeater's power is on but the phone cannot get connected to the network and still can not communicate.

**Reason 1:** There are loose or wrong connections in the repeater system.

**Solution:** Please try to fasten the connections between different parts of the system.

**Reason 2:** The signals received by outdoor antenna of other operators nearby are too strong. (For example, the other operators' signals are 10 dB stronger than the needed signals.)

**Solution 1:** Change the direction of the outdoor antenna or its installation position, so that the gap of signal strength is reduced between operators.

**Solution 2:** Use barriers (like buildings and walls) to block signals from other operators.

## 8. FAQ

### 1. Will booster increase the RF radiation?

No, it will decrease instead.

Every cell phone irradiates heavily being in zones with poor mobile signal as a cell phone is constantly in searching mode. The danger is your cell phone is about 2cm to your body, which makes its usage rather harmful. And when a booster is installed, it improves the mobile signals in the coverage, and your cell phone stops irradiating strongly, thus it will reduce the RF radiation of the mobile phone tremendously.

The maximum power level of booster is 0.01W, and it decreases to be maximum 0.001W when reaching indoor antenna. And since the indoor antenna is installed over the ceiling or onto the wall, there is usually more than 3 meter away from the human body, 3meter away means at least 40dB propagation loss, or 10000 times less, 0.0000001W, and therefore it is too weak to influence human bodies though it is still a very good signal for mobile phones.

### 2. If the power indicator is off after installing the repeater, what should I do?

Check if the repeater's power supply works normally or not.

### 3. If repeater's power supply is normal, ALM light is on or flashing all the time, what should I do?

Firstly, check whether all connectors are connected well or not. If it is all right, please, adjust the direction of the outdoor and indoor antenna. Make sure the horizontal distance is 75 feet or more, the vertical distance is 20 feet or more.

### 4. If the repeater and power supply are installed correctly, why the signal is still bad?

1. According to the steps above, verify if all the cables and connectors are connected correctly or not and correct the connections if necessary.

2. If connections are correct, please, adjust the direction of the outdoor antenna, point it towards BTS antenna, and make sure it can accept the strongest signal.

### 5. After installing the repeater, the signal is good, but the connection is slow or intermittent, or I cannot hear clearly the other side?

1. Please, check the indoor antenna position, and whether the cables and connectors are connected correctly or not.

2. Adjust the indoor antenna direction and make sure it can easily receive a cell phone signal.

## 9. ABOUT NIKRANS BRAND

Nikrans boosters is the result of a 7-year experience in selling cell phone signal amplifiers throughout EMEA, APAC, NAR and other regions. For all these years we've been following the market carefully listening to customers and industry leading experts with the aim of working up our own vision and quality standards in signal amplification.

Nikrans product line includes about 40 models: from basic single-band devices with 100 m<sup>2</sup> coverage to high-end all-in-one solutions covering up to 5000 m<sup>2</sup>. Depending on the model, boosters operate in GSM, DCS, CDMA, LTE or combination of these standards at 850-2100 MHz frequencies. The product line is extended with a series of antennas, splitters and other accessories for completing exclusive custom projects of any difficulty level.

Nikrans product development process is rigorously assessed to comply with ISO 9001:2008 standard and implicates internal tests, which greatly ensures the quality of our goods. High product quality is also confirmed by Phoenix Testlab, Germany and is proved with CE and RoHS certificates. That's why a 3-year warranty applies to any of Nikrans boosters.

### Certificates





Hereby, Nirkans declares that this signal booster is in compliance with the essential requirements and other relevant provisions of Radio Equipment Directive (RED) 2014/53/UE (CE marking).

In Norway, it is necessary to obtain the appropriate permissions from the respective service providers. The installation of Personal Repeaters must be conducted in accordance with regulations set by the Norwegian Communications Authority (Nkom).

info@myamplifiers.no · +18885740580 (Sales) · www.myamplifiers.no