

INSTALLASJONSVEILEDNING

MOBILTELEFON SIGNALFORSTERKER

Nikrans NS-GDW-L-Boats



Frek.: 900, 1800, 2100 MHz
Dekning: 2000 m²

PREFACE

This user's manual describes the installation and maintenance of wide band consumer boosters. Please do read user manual carefully before installing and maintaining repeaters. The information in this manual is subject to change without prior notice.

1. SAFETY WARNINGS

Users must follow the principles below◇



Repeater should follow system requirements; assure good grounding and lightning protection.



The power supply voltage of repeater should meet security requirements; any operation shall be carried out only after turning off power in advance. Only the professional is authorized for the operation.



Do not dismantle machine, maintain or replace its components by yourself, because this way the equipment may be damaged and you may even get an electric shock.



Do not open the repeater, touch the module of the repeater, or open the cover of the module to touch electronic component. The components will be damaged due to electrostatic.



Please keep away from heating equipment, because the repeater dissipates heat during working. And do not cover a booster with anything that influences heat dissipation.

2. INTRODUCTION AND REASONS FOR WEAK CELLULAR SIGNALS

Mobile Signal Booster is a perfect solution for providing improvement of cellular signal reception inside a house, office, restaurant, VIP Room, apartment, building or shopping mall.

Generally cell phones cannot pick up or maintain a strong cellular signal due to one of the two following reasons:

1. **Location of the Nearest Base Station** - Base stations are used to provide broad coverage. However there are many areas in which signal strength gets reduced due to topographic peculiarities or local Governmental restrictions regarding the height or location of base stations. Rural areas generally have fewer base stations than urban regions.

2. **Natural and Man-Made Obstructions** - Signal strength can also be negatively affected by trees, hills, buildings, weather and other obstructions. You may be relatively close to a base station but still unable to make a call. This often occurs inside houses, offices and other buildings with stucco, concrete or metal walls that may block the signal.

The Signal Booster works with two antennas. An Indoor antenna communicates with your cell phone and an Outdoor antenna communicates with the base station (BS). The Outdoor antenna receives a signal from the BS and sends it through the cable to the Signal Booster, where it gets amplified and re-transmitted by the Indoor antenna throughout a building. When the Indoor antenna picks up a signal from your cellular device, the Signal Booster amplifies that signal and transmits it through the cable to the Outdoor antenna and back to the BS.

(Note: The Signal Booster will only operate if there is an adequate signal to amplify.)

3. MODEL DESCRIPTION

Bestill forsterkeren for båter NS-GDW-L for å forbedre samtaler og 3G, 4G / LTE mobilt internett i en båt eller yacht. Bredt utvalg av forsterkere til fornuftige priser!

NS-GDW-L-for båter er en trebånd mobiltelefon forsterker som gir stabilt arbeid med GSM taleforbindelse og mobilt 3G-båtinternett på området opp til **3000 m² (32000 ft²)** for **et ubegrenset antall brukere**. Forsterkeren kan brukes i alle typer store båter og yachter med flere dekk og nivåer. Denne båtforsterkeren **en alternerende utendørsantenne** som lar den **motta signal i 360 grader** fra leverandørers antenner i en avstand på opptil 40 km fra kysten. Standard marine forsterker-sett inkluderer en inne-antenne, men om nødvendig kan du koble opptil 4 inne-antenner, noe som vil være en god ide for båter med flere rom og dekk.

Triband båt repeater fungerer på **GSM 900MHz, DCS 1800MHz og 3G 2100MHz** frekvensbånd samtidig, som er en standardfrekvens ikke bare for **europaiske mobilleverandører**, men også for afrikanske og asiatiske. Denne triband marine repeateren er en universell modell som er i stand til å forbedre kvaliteten på telefonsamtaler ved 900- og 1800MHz-bånd, 3G-mobilt Internett på 2100 og 900MHz-bånd og **LTE 4G Internet på 1800MHz**-bånd under forutsetning av at mobiloperatøren din støtter navngitte mobilstandarder på disse frekvensene.

Nikrans NS-GDW-L-for båter har funksjoner som:

- **Automatisk nivåkontroll**, ansvarlig for å kontrollere repeaterforsterkningen avhengig av et innkommende signalnivå.
- **Automatic Styrkekontroll**, passer for intelligent justering av inngangssignalet i henhold til signalets fluktasjonsnivå.
- **Manuell Styrkekontroll**, er perfekt for brukere som ønsker å justere forsterkerforsterkning manuelt, basert på individuelle signalmottaksforhold.
- **Avstengingsfunksjon** for å unngå at forsterkeren går i stykker på grunn av feil installasjon eller for mye innkommende signal.
- **12V og 220V** strømforsyning samtidig leveres med boosterkit for enkelhets skyld.

Sikkerhet og kvalitet på båtrepeateren er i tråd med de internasjonale **CE- og RoHS-sertifikatene**. Påliteligheten til produktet bekreftes også av en 3-års garanti. Bestill stambåtutstyret hos oss så får du pålitelig internett på telefonen!

4. SPECIFICATION

Dekningsområde:	2000 m ²
Opplinkfrekvens:	880-915MHz, 1710-1785MHz, 1920-1980 MHz
Inngangsfrekvens:	925-960MHz, 1805-1880MHz, 2110-2170 MHz
Opplinkvinning:	70 dB
Nedlinkvinning:	75 dB
Strømforsyning:	AC 90~264V, DC9V/3A, 27W
Energiforbruk:	0.007 kW/h
Fungerer i temperaturer på °C:	-25/+55
Fuktighet:	5 - 95%
Størrelse (mm):	250×250×52
Forsterkerens vekt:	3.5 kg
dBm:	23 dBm

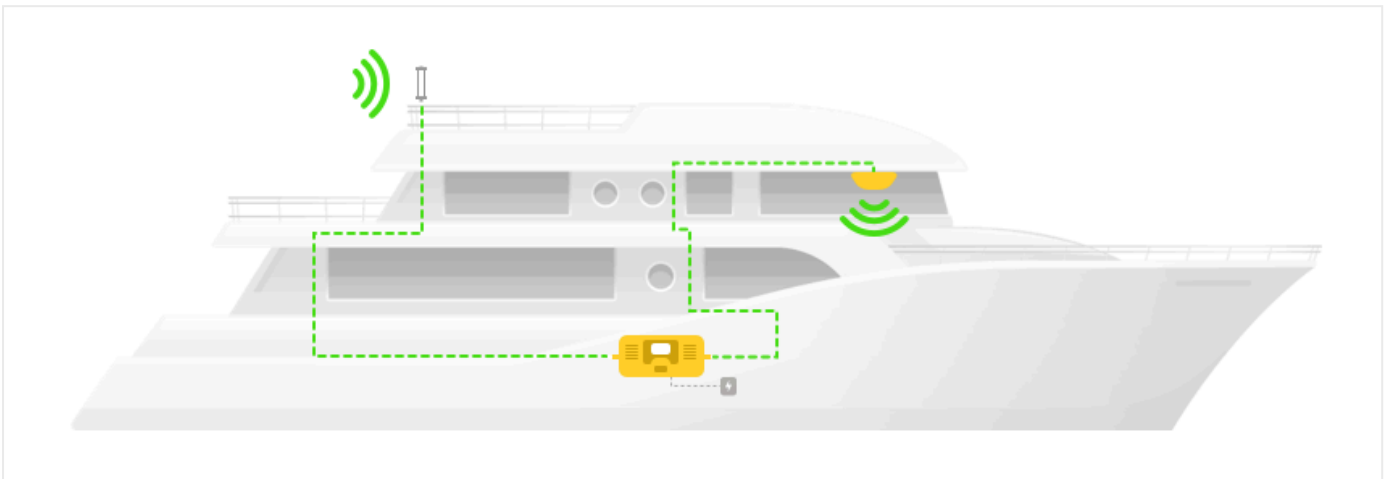
5. REPEATER SYSTEM OVERVIEW

The picture below shows how simple and fast booster installation is and how effectively it works.

Out-of-car antenna should be fixed in a proper place (for example, on a car trunk) and connected with the booster by cable. Then fasten the in-car antenna to the booster and plug the power supply into the cigar lighter. Just in a few seconds the signal will become boosted in your car.

A repeater kit includes:

- **Out-of-car Antenna**◊
Function: To pick up outside signals from the base station and send them by cable to the repeater; out-of-car antenna also transmits the uplink signals from the repeater back to the base station.
- **In-car Antenna:**
It is mounted inside the vehicle with the purpose to transmit the improved signals throughout the coverage area.
- **Cables:** cables for connecting indoor and outdoor antennas.
- **Mountings:** Special mountings for antennas and the booster (depends on a booster model)
- **Power Supply** (12V for a cigar lighter)



6. ANTENNAS AND CABLES SETTING UP

6.1. Outdoor antenna installation

Mount out-of-car antenna onto the car trunk fixing it on a magnetic antenna's surface.

Cable layout and connector assembly

1. Keep the type, specifications, routing direction, location and curvature radius of cables in compliance with the model requirements. Place cables in correct order, bend them smoothly, and protect the surface from any damage.
2. Place RF cables separately from power cables. Take proper isolation measures if they have to be placed on the same cable racks owing to the site condition restrictions.
3. Fasten all connection parts of the whole system in correct order, from the antenna to repeater interfaces, and make sure that the electrical interfaces are well contacted. Give waterproof treatment to outdoor connection parts.
4. Take lightning protection measures for the antenna and feeder system in accordance with the system requirements. Avoid deforming the antenna feeder where grounding clips are placed, and give waterproof treatment to the feeder.

Indoor antenna installation

1. Find a suitable position for an in-car antenna (e.g. under the seat of a driver).
2. Clear and dry the place where you're going to fix the in-car antenna. Put up the nylon strap tightly on the chosen position and stick the antenna firmly.
3. Plug in the in-car antenna into the booster interface and fasten it tightly.

7. REPEATER INSTALLATION

7.1 Installation requirements

7.1.1 Installation Location Requirements

No specific installation requirements shall be followed.

7.1.2 Power requirement

DC 12V. Connect the Power adapter to the cigar lighter.

7.2. Installation Steps

INSTALLATION STEPS

1. Find a suitable position for an in-car antenna (e.g. under the seat of a driver).
2. Clear and dry the place where you're going to fix the in-car antenna. Put up the nylon strap tightly on the chosen position and stick the antenna firmly.
3. Plug in the in-car antenna into the indoor booster interface and fasten it tightly.
4. Mount out-of-car antenna onto the car trunk fixing it on the antenna's magnetic surface.
5. Plug in the out-of-car antenna into the outdoor booster interface and fasten it tightly.
6. Connect the Power adaptor to the cigar lighter. If the indicator on the booster lights up the installation has been made correctly.

NOTE: Switch on the signal booster only after installing out-of-car and in-car antennas correctly!

7. Test the signal of your mobile telephone. After installation, mobile signal should get maximally strong within all the car area. In case the mobile connection is still instable try to change the position of the antennas for a better result.

7.2.2 Repeater's ports description

1. Outdoor port: connected with the outdoor antenna by cable
2. Indoor port: connected with indoor antenna directly or by cable (depending on a booster model)
3. Connect the Power supply into the cigar lighter.

7.2.3 Accessories selection

No need. Use standard accessories.

7.3. Repeater Settings

7.3.1. Indicator Light Instructions



After power is on, check firstly the alarm and power LEDS.

Status and definition of POWER indicators:

Status	Definition
Green	Normal
Off	Power problem

Status and Definition of ALARM LED indicators; Alarm LED only works for downlink signals.

Status	ALARM
Green	It is working in linearity
	Warning: Input signals may be not enough, so please check on coverage effect, do not do anything if it is good coverage; otherwise please adjust the repeater system to get better coverage.
Orange	A little bit stronger input signals or slight self oscillation have occurred.
	Solution: Please adjust antennas or use MGC to reduce the repeater gain, till you find "edge point" with green LED (I.E. the Alarm LED must stay at green color, and at the edge of turning Orange), and let the repeater work at this point. MGC is the last measure to take as it will shorten the coverage.
Red for 5 seconds and then off	There are strong input signals or severe self oscillations (loop), please enlarge the distance or make use of barriers between antennas, or adjust the antennas' angles, and last step is to adjust the repeater by DIP switch.

Remark: Please note that Alarm LED works on repeater downlink signals only. I.E. the repeater input signals from CELL TOWER.

Single system repeater only has one set of power and alarm LEDS, while dual system have two sets of power and alarm LEDS, and three system repeaters have three sets of LEDS. Each system has own relevant LED and please refer to the correct LED for system performance evaluation.

Then repeater with plastic closet is designed with LEDS of "Alarm LOW" and "Alarm HIGH". When it is used for single system of CDMA800, GSM850 and GSM900, only "Alarm Low" LED works, and "Alarm HIGH" LED is no use; when it is used for single system of DCS, PCS, CDMA1900, WCDMA or AWS, "Alarm HIGH" LED works, and "Alarm LOW" LED is no use. When the repeater supports two systems, "Alarm Low" and "Alarm HIGH" both work and support relevant low and high frequencies.

Manual Gain Control (MGC)

DIP Switch can be used to adjust the repeater gain when Alarm LED is orange or even RED. The principle is that repeater alarm LED must be green color.

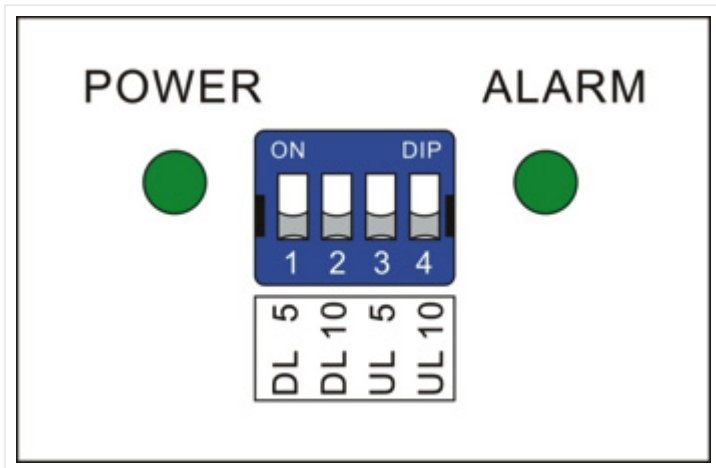
For single system metal closet:

Switches 1.2 represent Downlink and 3.4 represent Uplink. When it is necessary to adjust the gain by DIP switch, firstly please adjust Downlink gain according to input signals, secondly please adjust Uplink gain according to Downlink gain.

The DIP Switches have default 'OFF' status; please push relevant switches to "ON" position if certain

attenuation value needs to be achieved.

DIP switch downlink attenuation setting:

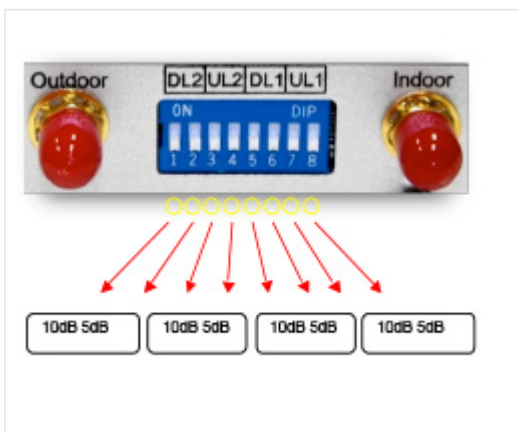


DIP switch uplink attenuation setting:

Att	3	4
0 dB	off	off
5 dB	ON	off
10 dB	off	ON
15dB	ON	ON

For single system plastic closet ◆

Turn ON the dip switches to reduce gain as follows:

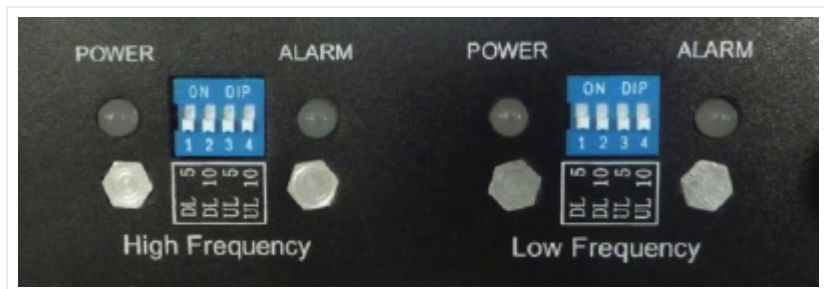


Put ON a pair of switches for a total of 15dB reduction in gain.
 (DL1 & UL1 - Alarm Low) - For 800MHz or 900 MHz Band
 (DL2 & UL2 - Alarm High) - For 1700, 1800, 1900 & 2100 MHz Band

Remark: In single system, there is only one system could be set.

For dual system metal closet:

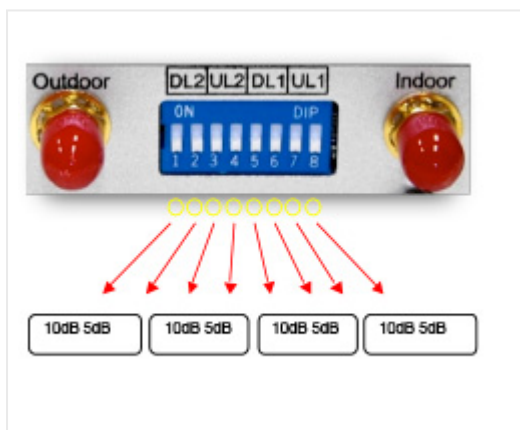
Turn ON the dip switches to reduce gain as follows:



Put ON a pair of switches for a total of 15dB reduction in gain.
(DL1 & UL1 - Alarm Low) - For 800MHz or 900 MHz Band
(DL2 & UL2 - Alarm High) - For 1700, 1800, 1900 & 2100 MHz Band

For dual system plastic closet

Turn ON the dip switches to reduce power as follows:



Put ON a pair of switches for a total of 15dB reduction in gain.
(DL1 & UL1 - Alarm Low) - For 800MHz or 900 MHz Band
(DL2 & UL2 - Alarm High) - For 1700, 1800, 1900 & 2100 MHz Band

For triple system metal closet (For example: F10I-GDW)

Turn ON the dip switches to reduce gain as follows:



Put ON a pair of switches for a total of 15dB reduction in gain. You can reduce any system in the products.

Turn ON the dip switches of GSM or DCS or WCDMA to reduce the gain of GSM system.

Repeater Commissioning

Downlink gain setting

First the alarm LED only indicates the downlink input power level, here we use color of Alarm LED to adjust the gain of the repeater. Alarm LED color must remain green. As for the downlink working performance, it is a good working point that Alarm LED maintains "Green" color with the intention of turning orange; here we refer as "edge point". At this time, downlink output power and coverage effect are stable.

And the equipment must be as far as possible away from overloading status of "red" (the equipment would hold higher interference and depression ability at this stage). So we shall try our best to set the equipment near "edge point" of green and intention of turning orange during engineering.

Setting of "edge point":

Switch on the power supply after connection with donor antenna and server antenna, and observe ALARM LED.

- If it shines "orange", use 1dB as step to reduce the gain until "green" turns on, then increase the gain 1~3dB attenuation value until "orange" starts to turn on, then brings back 1~2dB till "green" is on, then fix the gain and the repeater's downlink output power reaches the perfect status.
- If it shines "green" then:
 - Please check coverage effect firstly, if the coverage effect is good, the engineering has reached expecting target, thus there is no need to do anything.
- To check whether the attenuation value has been set, if it is, use 1dB as step to increase gain until the "orange" turns on, then brings back 1~2dB till "green" is on again, then the repeater's downlink output power reaches the perfect status.
- But if attenuation has not been set, it indicates that the input power is not strong enough to let the repeater reach its good coverage.

If the coverage effect is not good, the donor antenna should be adjusted to get stronger input signal. It is recommended that one person shall check the coverage effect inside the building when the other person is trying to adjust the antenna or the repeater. At this stage, please make sure "Orange" color will not be generated by self oscillation. Please take off the server antenna to check if it is self oscillation or not: if the Orange turns to be green, it is self oscillation; if it stays as Orange, it is not self oscillation. Please follow steps in other page to turn Orange to be Green.

Uplink gain setting

Standard: uplink attenuation values =downlink attenuation values

Remark: Avoid putting more than a 5dB difference between the Uplink and Downlink. And Uplink gain must be equal to or less than Downlink gain, it can't be more in order to avoid interference with mobile network.

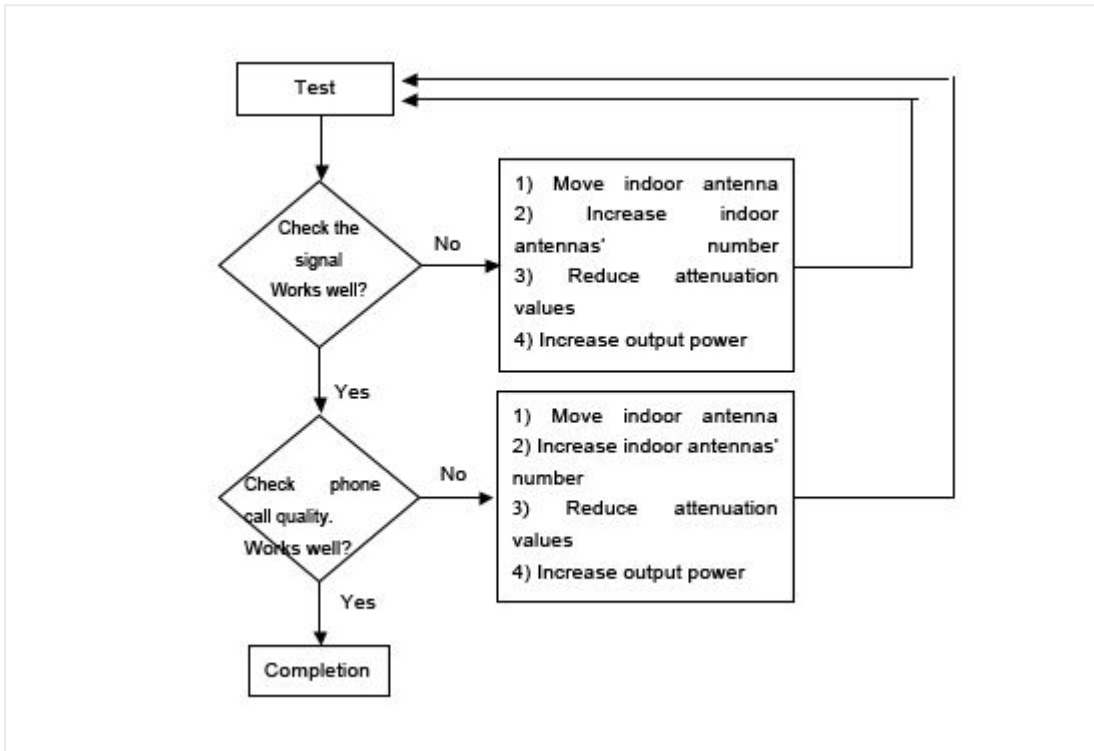
7.4. System Test

7.4.1. Check whether the coverage is good

1. If the signals in small parts of the area have not been improved, please check the following:
 - Check whether the indoor antenna is installed correctly or not; you may try to change the

antenna location to improve coverage.

- Check if it is necessary to adjust the direction of the indoor antenna.



For maximum precision in signal level testing, switch your cell phone into Field Test Mode and see dB parameter. The closer dB signal level to 0, the better cell phone reception you'll get.

- -105 to -100 = Bad/drop call
- -99 to -90 = Getting bad/signal may break up
- -89 to -80 = OK/shouldn't have problems, but maybe
- -79 to -65 = Good
- Over -65 = Excellent

Your task is to get at least -79dB signal to ensure reliable communication and strong signal inside the building.

Remark:

- **Reduce attenuation values** * — by ensuring the isolation level
- **Increase output power** * — recommended ways: to adjust outdoor antenna direction/location, or replace it to an antenna with higher gain to increase input signal strength.

7.4.2 Repeater can not communicate in Power-ON status

The repeater's power is on but the phone cannot get connected to the network and still can not communicate.

Reason: There are loose or wrong connections in the repeater system.

Solution: Please try to fasten the connections between different parts of the system.

8. FAQ

1. Will booster increase the RF radiation?

No, it will decrease instead.

Every cell phone irradiates heavily being in zones with poor mobile signal as a cell phone is constantly in searching mode. The danger is your cell phone is about 2cm to your body, which makes its usage rather harmful. And when a booster is installed, it improves the mobile signals in the coverage, and your cell phone stops irradiating strongly, thus it will reduce the RF radiation of the mobile phone tremendously.

The maximum power level of booster is 0.01W, and it decreases to be maximum 0.001W when reaching indoor antenna. And since the indoor antenna is installed over the ceiling or onto the wall, there is usually more than 3 meter away from the human body, 3meter away means at least 40dB propagation loss, or 10000 times less, 0.0000001W, and therefore it is too weak to influence human bodies though it is still a very good signal for mobile phones.

2. If the power indicator is off after installing the repeater, what should I do?

Check if the repeater's power supply works normally or not.

3. If repeater's power supply is normal, ALM light is on or flashing all the time, what should I do?

Firstly, check whether all connectors are connected well or not. If it is all right, please, adjust the direction of the outdoor and indoor antenna. Make sure the horizontal distance is 75 feet or more, the vertical distance is 20 feet or more.

4. If the repeater and power supply are installed correctly, why the signal is still bad?

1. According to the steps above, verify if all the cables and connectors are connected correctly or not and correct the connections if necessary.
2. If connections are correct, please, adjust the direction of the outdoor antenna, point it towards BTS antenna, and make sure it can accept the strongest signal.

5. After installing the repeater, the signal is good, but the connection is slow or intermittent, or I cannot hear clearly the other side?

1. Please, check the indoor antenna position, and whether the cables and connectors are connected correctly or not.
2. Adjust the indoor antenna direction and make sure it can easily receive a cell phone signal.

9. ABOUT NIKRANS BRAND

Nikrans boosters is the result of a 7-year experience in selling cell phone signal amplifiers throughout EMEA, APAC, NAR and other regions. For all these years we've been following the market carefully listening to customers and industry leading experts with the aim of working up our own vision and quality standards in signal amplification.

Nikrans product line includes about 40 models: from basic single-band devices with 100 m² coverage to high-end all-in-one solutions covering up to 5000 m². Depending on the model, boosters operate in GSM, DCS, CDMA, LTE or combination of these standards at 850-2100 MHz frequencies. The product line is extended with a series of antennas, splitters and other accessories for completing exclusive custom projects of any difficulty level.

Nikrans product development process is rigorously assessed to comply with ISO 9001:2008 standard and implicates internal tests, which greatly ensures the quality of our goods. High product quality is also confirmed by Phoenix Testlab, Germany and is proved with CE and RoHS certificates. That's why a 3-year warranty applies to any of Nikrans boosters.

Certificates





Hereby, Nirkans declares that this signal booster is in compliance with the essential requirements and other relevant provisions of Radio Equipment Directive (RED) 2014/53/UE (CE marking).

In Norway, it is necessary to obtain the appropriate permissions from the respective service providers. The installation of Personal Repeaters must be conducted in accordance with regulations set by the Norwegian Communications Authority (Nkom).

info@myamplifiers.no · +18885740580 (Sales) · www.myamplifiers.no